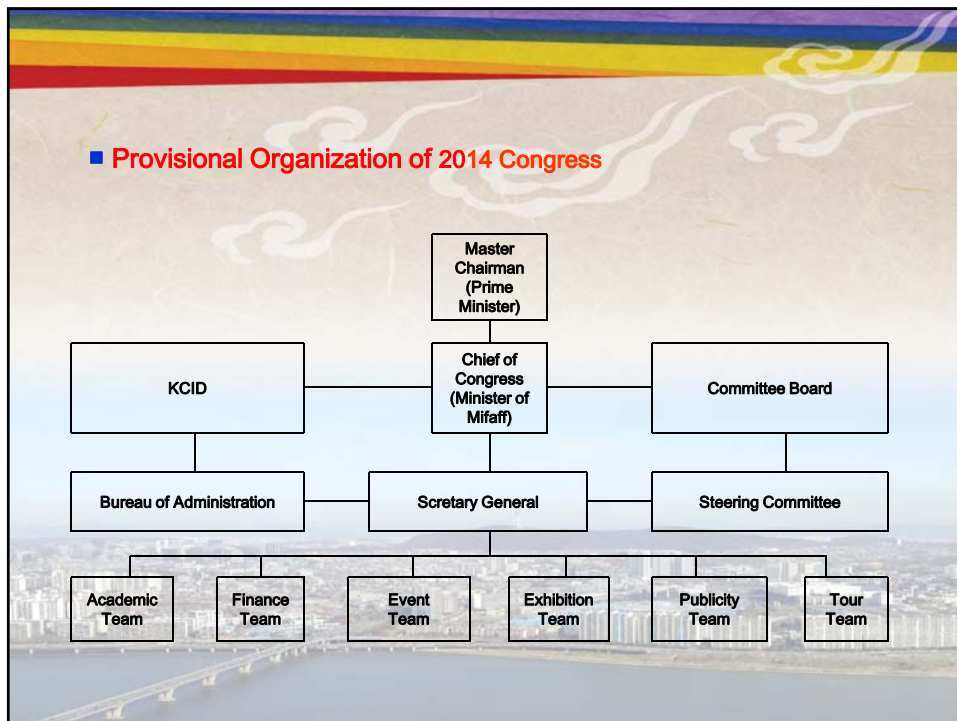


- ◆ **Select subjects :**
 - Select items which could induce interesting from member countries considering current situation
 - Enables many countries could be joined
 - Special Session : Select various subjects which enables many related organizations and institutions
 - Ex: ODA related subjects
- ◆ **Participation of International Organizations :**
 - Provides interesting motives which encourage participation of International Organizations such as UN, FAO, ADB, World Bank



■ Budget

Income		Expenditure		Remarks
Items	US \$	Items	US \$	
Total	1,000,000	Total	700	
Registration	250,000	Expenditures up to 2013	150,000	Publicity etc.
Exhibition	46,000	Preparation	200,000	
Study Tour	4,000	Event	300,000	
Subsidy	500,000	PCO	150,000	
Supports	200,000	Reserve	100,000	
		Publishing	100,000	Special books

Period of Congress

■ 1st Priority: 3rd week October

Sun	Mon	Tue	Wed	Tur	Fri	Sat
19	20	21	22	23	24	25

■ 2nd Priority : 4th week October

Sun	Mon	Tue	Wed	Tur	Fri	Sat
26	27	28	29	30	31	11/1

* Considering the period of National Assembly Meeting

Venue of Congress

■ **1st Choice:**
Conventia in Incheon





전시장 회의실

Venue of Congress

■ **Advantages**

- ◆ 15 min. distance from Incheon Intl' Airport
- ◆ 1 hour distance from Seoul
- ◆ 6 top-level hotels and business hotels, foreigner's hospital, and large departments are situated within 15 min. distance

■ **Disadvantages**

- ◆ Far from the four places



■ 2nd Choice :
KOEX in Seoul




회의실 전시장

■ **Advantages**

- ◆ 1 hour distance from the airport by Limousine bus
- ◆ Lot of choices of hotel in various levels
- ◆ Large shopping center in KOEX
- ◆ Easy to access to field trip

■ **Disadvantages**

- ◆ Very busy and crowded





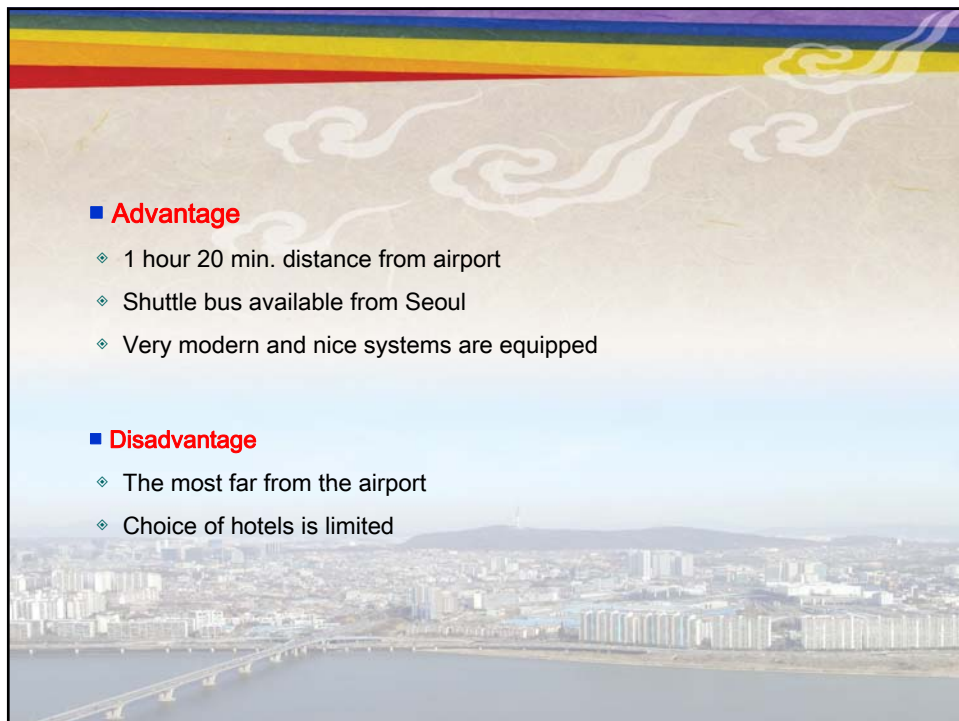
■ 3rd Choice :

KINTEX in Ilsan

2F



회의실



■ **Advantage**

- ◆ 1 hour 20 min. distance from airport
- ◆ Shuttle bus available from Seoul
- ◆ Very modern and nice systems are equipped

■ **Disadvantage**

- ◆ The most far from the airport
- ◆ Choice of hotels is limited

