



**DR. Dominique ROLLIN,**  
Representative from French National Committee of ICID (AFEID)

# 1 An enchanting destination Montpellier, the city and the region



1 - DESTINATION MONTPELLIER AND THE LANGUEDOC-ROUSSILLON REGION

CENTRALLY LOCATED IN THE SOUTH OF FRANCE, AT THE HEART OF THE MEDITERRANEAN BASIN



Innovate pour améliorer les performances de l'irrigation  
 Innovate to improve irrigation performances

11-17 Oct.   
 Montpellier (France)

Conference Euro-Méditerranéenne sur l'Irrigation  
 Euro-Mediterranean Conference on Irrigation

AFEID

1 - DESTINATION MONTPELLIER AND THE LANGUEDOC-ROUSSILLON REGION

A VIBRANT, FAST-GROWING CITY AND A REGION WITH SO MUCH TO OFFER



300 days of sunshine each year  
 Fabulous heritage nestled between the countryside, the sea and the mountains  
 3h15 from Paris by TGV  
 12 flights per day to Paris Orly & CDG  
 daily flights: Lyon, Strasbourg and Nantes

A pedestrianised city 8km from the sea  
 4 tram lines  
 TGV station a 15 minute walk from Le Corum  
 Airport opposite the Park&Suites Arena  
 Hotel facilities renovated and extended recently.



Innovate pour améliorer les performances de l'irrigation  
 Innovate to improve irrigation performances

11-17 Oct.   
 Montpellier (France)

Conference Euro-Méditerranéenne sur l'Irrigation  
 Euro-Mediterranean Conference on Irrigation

AFEID

1 - DESTINATION MONTPELLIER AND THE LANGUEDOC-ROUSSILLON REGION  
AN UNRIVALLED HISTORIC AND MODERN HERITAGE



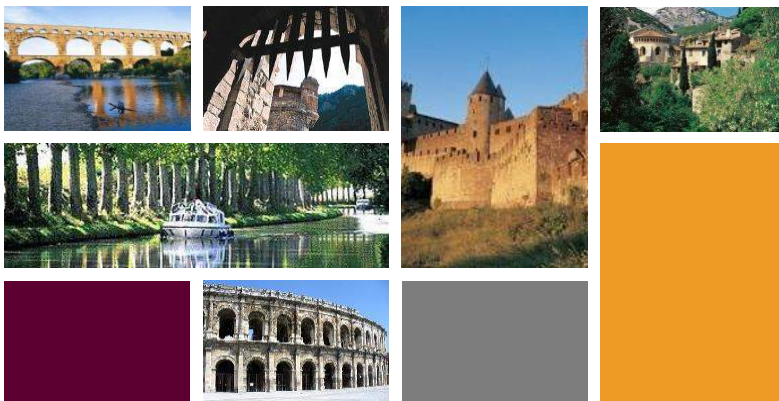
Innovate pour améliorer les performances de l'irrigation  
Innovate to improve irrigation performances

11-17 Oct. Montpellier (France)

Conférence Euro-Méditerranéenne sur l'Irrigation  
Euro-Mediterranean Conference on Irrigation

AFEID

1 - DESTINATION MONTPELLIER AND THE LANGUEDOC-ROUSSILLON REGION  
NUMEROUS UNESCO WORLD HERITAGE SITES



Innovate pour améliorer les performances de l'irrigation  
Innovate to improve irrigation performances

11-17 Oct. Montpellier (France)

Conférence Euro-Méditerranéenne sur l'Irrigation  
Euro-Mediterranean Conference on Irrigation

AFEID

1 - DESTINATION MONTPELLIER AND THE LANGUEDOC-ROUSSILLON REGION  
NATURE, WILD AND FREE




 Innover pour améliorer les performances de l'irrigation  
 Innovate to improve irrigation performances  
 11-17 Oct. Montpellier (France)  
 Conférence Euro-Méditerranéenne sur l'Irrigation  
 Euro-Mediterranean Conference on Irrigation  

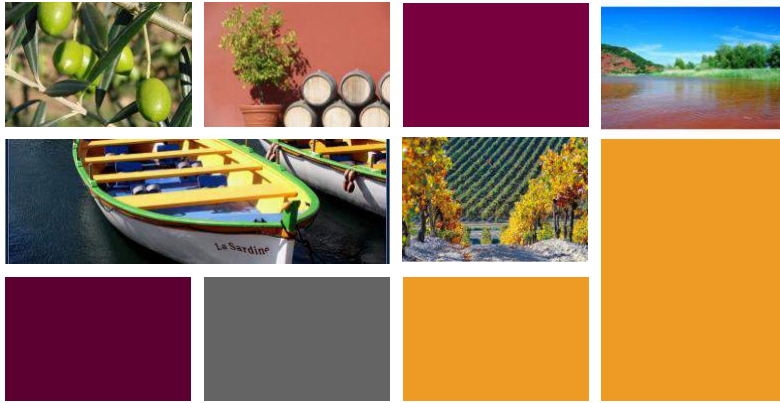

1 - DESTINATION MONTPELLIER AND THE LANGUEDOC-ROUSSILLON REGION  
FORTIFICATIONS AND FISHING VILLAGES




 Innover pour améliorer les performances de l'irrigation  
 Innovate to improve irrigation performances  
 11-17 Oct. Montpellier (France)  
 Conférence Euro-Méditerranéenne sur l'Irrigation  
 Euro-Mediterranean Conference on Irrigation  




1 - DESTINATION MONTPELLIER AND THE LANGUEDOC-ROUSSILLON REGION  
MEDITERRANEAN CULTURE



2. A practical destination  
Easy to access with a wide choice of accomodation



## 2 - MONTPELLIER, A PRACTICAL DESTINATION

EASY TO ACCESS



### Montpellier Méditerranée International Airport:

**8km/15 minutes** from the city centre and Conference Centre  
Opposite the Park&Suites Arena  
3 car parks/Airport shuttles from the city centre

#### Direct flights to French destinations:

12 flights per day (1h flight)	MPL ⇄ PARIS ORLY/CDG
3 flights per day	MPL ⇄ LYON
3 flights per day	MPL ⇄ NANTES
2 flights per day	MPL ⇄ STRASBOURG
Several flights per week	MPL ⇄ RENNES & DEAUVILLE

#### Direct flights to numerous destinations in Europe and North Africa including:

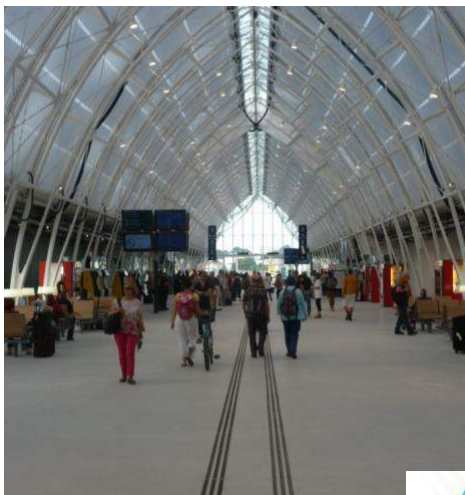
Rotterdam, Brussels, Copenhagen, Munich, Frankfurt, London, Birmingham, Manchester, Leeds, Casablanca, Algiers, Fez, Nador and Oran.

[www.montpellier.aeroport.fr](http://www.montpellier.aeroport.fr)



## 2 - MONTPELLIER, A PRACTICAL DESTINATION

EASY TO ACCESS



### Montpellier St Roch Station

**10 minute walk/5 minutes by tram**  
from the Conference Centre

**20 minutes by tram** from the Park&Suites Arena  
and the Exhibition Centre

#### Direct TGV services to:

Paris Gare de Lyon: 3h15  
11 trains per day

Paris-Charles de Gaulle airport, Marne-la-Vallée,  
Lille, Lyon, Toulouse, Marseille, Nice, Bordeaux,  
Barcelona, Geneva and Brussels



2 - MONTPELLIER, A PRACTICAL DESTINATION  
 WIDE CHOICE OF ACCOMMODATION



HOTELS	CATEGORY	CAPACITY
19	**** / *****	1,694 ROOMS
OVER 30	***	1,887 ROOMS
OVER 40	**	1,978 ROOMS

**Accommodation in Montpellier:** 7,800 hotel and apartment hotel rooms  
**Numerous international hotel chains including:** Marriott (Courtyard by Marriott), Intercontinental (Crowne Plaza linked to Le Corum by a footbridge), Accor (Pullman, Novotel, Mercure, Ibis), etc.  
**Montpellier's hotel facilities have been renovated and extended recently, and opening soon are** the Golden Tulip 4\* (100 rooms) and Campanile 3\* (70 rooms) in the new St-Roch district.

Major partnership with:  
 2 **Park&Suites** apartment hotels



Innovate to improve irrigation performances

11-17 Oct. Montpellier (France)

Conférence Euro-Méditerranéenne sur l'Irrigation / Euro-Mediterranean Conference on Irrigation

A FEID

3. Exceptional facilities

Innovate to improve irrigation performances

11-17 Oct. Montpellier (France)

Conférence Euro-Méditerranéenne sur l'Irrigation / Euro-Mediterranean Conference on Irrigation

A FEID



# Location



## 3 - EXCEPTIONAL FACILITIES

LE CORUM - IN THE CITY CENTRE

1-minute walk



8km



10-minute walk



15 minutes by bus or taxi



5 minute walk



Le Corum tram station (3 lines)



500 parking spaces



Innovate to improve irrigation performances

11-17 Oct. Montpellier (France)

Conference Euro-Mediterranée sur l'Irrigation / Euro-Mediterranean Conference on Irrigation





### 3 - EXCEPTIONAL FACILITIES

LE CORUM – A PRESTIGIOUS MULTI-STAGE COMPLEX



fully-equipped  
auditoria

Pasteur (745 seats)  
Einstein (318 seats)

24 seminar rooms

for 50 to 200 people  
most offering natural light



## Themes of the 26<sup>th</sup> ERC

*“Innovate to improve irrigation performances”*

### Innovations for smallholders in irrigation

Today drip irrigation is spreading fast across the world, both in formal settings (via state subsidies to farmers) and informal private investment. New business opportunities arise in the resale of used equipment and installation of equipment at the local level. Drip irrigation develops a lot for small farmers who are innovative in adapting technology to their needs.

*What are the processes of adoption and adaptation of this technology by small farmers? What are the in situ technical economic and environmental performances? How to encourage convergence between agricultural and environmental policies and initiatives at the local level?*





## Themes of the 26<sup>th</sup> ERC

*“Innovate to improve irrigation performances”*

### Wastewater use in agriculture

Tensions over water resources and development of peri-urban agriculture generates an increasing massive use of wastewater in agriculture. The use of such water is regulated by the policies of many countries that have issued standard treatments to define their possible uses (agricultural food and non-food, green areas). However the actual use of these waters by farmers does often not comply with these rules with health and environmental consequences. In contrast, other countries where this resource useful supplements conventional resources prohibit or severely restrict its use by an excessive application of the precautionary principle.

*What are the lessons learnt from the use of wastewater in agriculture? What are health and environmental consequences?*



## Themes of the 26<sup>th</sup> ERC

*“Innovate to improve irrigation performances”*

### Governance of surface water and groundwater

Groundwater use is increasing worldwide due to the easy access to the resource. It generates a groundwater economy but creates the conditions for overuse. Access to groundwater occurs most often individually but with many arrangements processes resulting in the establishment of informal groundwater markets at the local level. This is occurring both within irrigated schemes with groundwater questioning the conventional surface water governance, or outside the schemes with limited water renewal.

*How to define groundwater governance rules from local experiences? How to integrate governance of surface water and groundwater?*





## Expected Participants

Participants attendus	France	International	TOTAL
Research	100	100	200
Government	50	50	100
Industry and Agriculture	50	50	100
Accompanying person		75	75
Students (Agronomy, water management)		75	75
<b>TOTAL</b>			<b>550</b>



## Participants Fee structure

Tarif des inscriptions	EB (jusqu'au 31/07/15)			NORMAL		
	Tarif \$ TTC	Tarif € TTC	€ HT	Tarif \$ TTC	Tarif € TTC	€ HT
Inscription membres	\$ 850	645	538	\$ 1 000	759	633
Inscription non membres	\$ 1 000	759	633	\$ 1 200	910	758
Jeune Professionnel	\$ 500	379	316	\$ 600	455	379
Retraité	\$ 500	379	316	\$ 600	455	379
Personne Accompagnante	\$ 400	303	253	\$ 500	379	316



# Tentative Programm

	Sunday 11/01/15	Monday 12/01/15	Tuesday 13/01/15	Wednesday 14/01/15	Thursday 15/01/15	Friday 16/01/15	Saturday 17/01/15
		Euro-Mediterranean conference					
		side events					
					PFC-PCSO-PCTA	66th IEC of CBD	technical tour
					organizational tour/visite	Technical tour	technical tour
all day	Exhibition - Poster	Exhibition - Poster	Exhibition - Poster	Poster	Poster	Poster	
09:00		Inauguration of the 66th IEC and Euro-Mediterranean Conference	WG HIST1 + EB JOUR1 + WG DSST1 + WG POVERTY1 + WG DRRI1 + WG ON FARM 1	Workshop 5 Euro-Mediterranean Conference	C CONGR1 + C PR&P1 + TF WWT7 + TF FN1 + WG WATTS1 + WG CROP1 PCSO-1	Euro-Mediterranean Conference Workshop 7-8 Workshop 9-10	PCTA-1 66th IEC
10:00		coffee break	coffee break	coffee break	coffee break	coffee break	
11:00		Inauguration of the 66th IEC and Euro-Mediterranean Conference	WG HIST2 + EB JOUR2 + WG DSST2 + WG POVERTY2 + WG DRRI2 + WG ON FARM 2	Workshop 5 Euro-Mediterranean Conference	C CONGR2 + C PR&P2 + TF WWT7 + TF FN2 + WG WATTS2 + WG CROP2 PCSO-2	Euro-Mediterranean Conference Workshop 7-8 Workshop 9-10	PCTA-2 66th IEC
12:00		Cocktail-lunch	lunch	lunch	lunch	lunch	Technical tour
13:00							Technical and cultural Tour
14:00	AS R WG1 + WG YPF1 + ER WG3 + AF R	Workshop 3	WG POW1 + WG DROUGHT1 + WG SDTA1 + WG CAFM1 + WG CLIMATE1 + WG ENV1	Workshop 6 Euro-Mediterranean Conference	PFC 1 TF BID + TF MDGs + TF VE + autre	Euro-Mediterranean Conference Grand Workshop 11 court Workshop 12	PCTA-3 66th IEC
15:00		Workshop 1 Euro-Mediterranean Conference	Workshop 4	Workshop 2	Workshop 1	Workshop 2	Technical Tour
16:00		AS R WG2 + WG YPF2 + ER WG2 + AF R	Workshop 3	WG POW2 + WG DROUGHT2 + WG SDTA2 + WG CAFM2 + WG CLIMATE2 + WG ENV2	Workshop 6 Euro-Mediterranean Conference	PFC 1 Closing ceremony for Euro-Mediterranean Conference	PCTA-4 66th IEC
17:00		Workshop 1 Euro-Mediterranean Conference	Workshop 4	Workshop 2	Workshop 1	Workshop 2	
18:00							
19:00		Invitation by Committee for Cocktail		Invitation by Committee for Cocktail		Farewell Dinner	
20:00							



## Accompagny Persons Tours (propositions)

**Montpellier old city**  
25€ = 30\$

Half day guided visit in the old streets of Montpellier.

**Towns and landscapes**  
80€ = 100\$

Full day visit to catch a glimpse at beautiful spots along Herault River

**Gastronomic day**  
80€ = 100\$

Full day around Montpellier to discover quality local food productions,... to be eaten and drinken.

**Sète**  
80€ = 100\$

Full day in Sète and arounds.

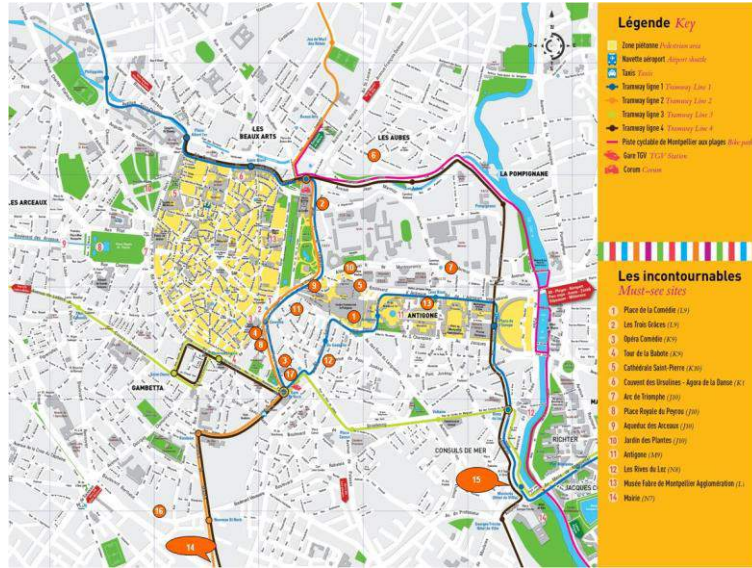
**Nimes old city**  
25€ = 30\$

Half day guided visit to discover Roman heritages

\*Half day visit cost includes transportation, French/English interpretation and all entries permit  
\*Full day visit cost includes transportation, French/English interpretation, all entries permit and lunch.



# Hotels (location)



# Hotels (description)

N° Map	HOTELS	RATE PER NIGHT BREAKFAST TAX INCLUDED		All rooms are equipped with private bathroom (& Kitchen in <i>Appart'Hotel</i> )	Access to Corum		Parking	
		SINGLE	DOUBLE/TWIN		Walking dist.	Tramway/Bu	Private	Public
1	PULLMAN ANTIGONE 4*	211,40 €	232,80 €	Accor Chain, City center, between Comédie square and Antigone District	7 mn	8 mn	X	X
2	CROWNE PLAZA 4*	191,40 €	212,80 €	Crown Chain, in front of Le Corum Convention Center	1 mn		X	X
3	OCEANIA METROPOLE 4*			Oceanian Chain, charming hotel, City center, between Comédie square and Railway station Gare St-Roch	7 mn	6 mn	X	X
4	GRAND HOTEL DU MIDI 4*			Comédie square, Historic center, charming hotel	5 mn	2 mn	X	
5	MERCURE CENTRE 4*	157,40 €	174,80 €	Accor Chain, City center, between Comédie square and Antigone District	7 mn		X	
6	ULYSSE 3*	134,00 €	158,00 €	Charming hotel, near Le Corum Convention Center	2 mn		X	
7	KYRIAD ANTIGONE 3*	120,00 €	132,00 €	Louvre Hôtel Chain, near City Center, Antigone district	10 mn	8 mn	X	
8	ROYAL HOTEL 3*	105,00 €	125,00 €	Comédie square, Historic center, charming hotel	5 mn	2 mn		X
9	IBIS COMEDIE 3*	105,50 à 119,50	116,00 à 130,00	Accor Chain, City center, Comédie square	5 mn		X	X
10	IBIS CENTRE 3*			Accor Chain, City center, Comédie square	7 mn		X	X
11	IBIS STYLES 3*	101,00 €	102,00 €	Accor Chain, City center, Comédie square	5 mn	2 mn	X	X
12	EUROCIEL BEST WESTERN 3*	100,00 €	127,00 €	Best Western Chain, City center, Comédie square	5 mn	2 mn	X	X
13	APPART'HOTEL CITADINES ANTIGONE 3*			Appart'Hotel, Antigone district, near City Center	10 mn	8 mn	X	
14	PARK&SUITES OVALIE 3*			Appart'Hotel, Ovalie district, near City Center		15/20 mn	X	
15	LES CONSULS DE MER 3*	95,00 €	105,00 €	Appart'Hotel, Antigone district, near City Center		10 mn	X	
16	APPART'CITY SAINT ROCH 2*	75,85 €	81,70 €	Appart'Hotel, Gare St-Roch district, near City Center		10 mn	X	
17	L'HOTEL 2*			City center, between Comédie square and Railway station Gare St-Roch	10 mn	5 mn	X	X